



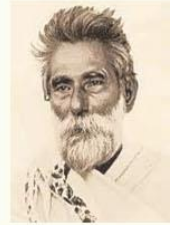
IJESM

April 2018

Volume - 7

Special Issue - 4(1)

ISSN : 2320-0294



**International Journal
of
Engineering, Science and Mathematics**

**Special Issue
on
Facets of Basic Sciences & Applications**

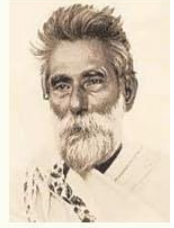
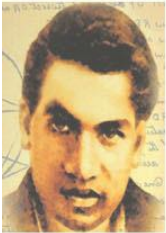
In Association with
Bijoy Krishna Girls' College, Howrah



www.bkgc.org

Email Id: ijesmj@gmail.com

Website : ijesm.co.in



International Journal of Engineering, Science and Mathematics

Volume - 7
Special Issue - 4(1)

ISSN : 2320-0294

Editorial Board for Special Issue

Chief Editors

Dr. Papiya Ghosh

Dr. Samiran Banerjee

Editors

Dr. Subhra Niyogi

Sunanda Maity

Ranen Bhattacharyya

Dr. Nandita Palit

Dr. Tanbir Nasim

External Advisory Editors

Prof. Madhusudan Das

Professor, Department of Zoology, Dean of Science, University of Calcutta

Dr. Samarjit Kar

Associate Professor, Department of Mathematics, National Institute of Technology, Durgapur

Prof. Samit Kumar Ray

Professor, Department of Polymer Science & Technology, University of Calcutta

Prof. Ranjan Das

Professor, Department of Chemistry, West Bengal State University

Table of Contents

Sl No	Title	Authors	Pages
1.	A Fuzzy Mean- Colog Portfolio Selection Model	Rupak Bhattacharyya, Somen De	1-7
2.	Stability of Pexiderized Functional Equation in Complex Banach Spaces: A Fixed-Point Approach	Parbati Saha, Pratap Mondal	7-12
3.	A Decision Support System using Probability Hypothesis Density Filter and Hungarian Optimization Algorithm	Sitansu Kumar Das Dwijesh Dutta Majumder	13-19
4.	A delayed predator-prey food chain model with harvesting	Ujjwal Kumar Pahari	20-27
5.	Alternative ion acoustic solitary waves behaviour in presences of Landau damping	Jayasree Das	28-40
6.	Finding the ring of integers and its algorithms in algebraic number theory	Rupen Chatterjee, Sonal Bharti	41-44
7.	Pineal Photoreceptor Molecules in Indian Major Carp <i>Catla catla</i>	Mohua Seth	45-52
8.	The autosomal ribosomopathy SBDS with inherited bone marrow failure is regulated by essential 60S Ribosome Biogenesis Factor eIF6	Arunima Biswas	53-60
9.	Analysis of the Pattern of Complex Carbohydrates of Bamboo Shoot and Plantain Stem with Special Emphasis on its Impact on Metabolic Disorders	Rukshana Irani, Kazi Layla Khaled, Chayanika Dutta	61-66
10.	Studies on the effect of application of carbaryl insecticide on Alfalfa (<i>Medicago sativa</i> L)	Moumit Roy Goswami Priya Banerjee, Snehasikta Swarnakar, Aniruddha Mukhopadhyay	67-73
11.	A Preliminary Study on Prevalence of Parasites in Ornamental Fish, <i>Carassius auratus</i> (Gold Fish)	Tanumay Paul, Jay Mandal Mandakranta Dasgupta Gargi Sarkar, Debasish Karmakar, Gautam Kundu Minakshi Mazumdar	74-83
12.	Characterize heavy metal tolerant rhizospheric sewage bacteria isolated from Tolly nullah (with special emphasis on strain <i>Microbacteriumradiodurans</i> K12016)	Chitrita Chatterjee Rabindranath Bhattacharyya Shampa Sarkar (Biswas)	84-95
13.	Fresh-Water Crab of Northeast India, Itsimportance and Conservation	Dipanjan Ray, Santanu Mitra, Sayantani Shaw Debnarayan Roy, Samir Kumar Bhandari, Tanmay Jana	96-104
14.	Immobilization of Lipase from <i>Rhizopus arrhizus</i> by Entrapment in Calcium Alginate Beads	Malabika Chakraborty	105-109
15.	Management of thyroid disorders- An overview	Sudipta Majumdar nee Paul	110-122
16.	Synthesis, Spectral Studies and Crystal Structure of a New Trinuclear Copper(II) Schiff Base Complex	SantarupaThakurta	123-128
17.	Removal of Synthetic dyes from water by using IPN hydrogels of chitosan incorporated acrylic acid and hydroxyl ethyl methacrylate copolymer	Bidyadhar Mandal	129-136
18.	Arsenic poisoning: A world – wide threat	Krishnanka Shekhar Gayen	137-140
19.	Poly- thiophene-co-pyrrole with varying monomer concentrations: Synthesis, characterization and Photophysical Property Analysis	Soumen Sardar, Abhijit Pal Uttam Kumar Ghorai, Srijoni Sengupta, Tamalika Das, Abhijit Bandyopadhyay	141-148
20.	A green method for the synthesis of 4 – Hydroxy – 4 – (2 – hydroxyphenyl) 2 – butanone using L – proline in aqueous micellar medium.	Satyajit Biswas	149-154
21.	Structural and Magnetic Properties of Some Dinuclear End on Azido Bridged Copper(II) Complexes	Soma Sen	155-162